

**WEEK END DU SPORT EN FAMILLE 2009**

<b>PARTICIPANTS</b>			
---------------------	--	--	--

<b>MARCHE</b>	<b>M 5</b>	<b>M 10</b>	<b>M 20</b>	<b>Total</b>
	<b>135</b>	<b>245</b>	<b>52</b>	<b>432</b>

<b>VTT</b>	<b>V 10</b>	<b>V 30</b>	<b>V 50</b>	<b>Total</b>
	<b>89</b>	<b>98</b>	<b>96</b>	<b>283</b>

<b>Route</b>	<b>R 30</b>	<b>R 60</b>	<b>R 100</b>	<b>Total</b>
	<b>48</b>	<b>64</b>	<b>44</b>	<b>156</b>

<b>Footing</b>		<b>7</b>
----------------	--	----------

<b>Activités</b>		<b>100</b>
------------------	--	------------

<b>TOTAL</b>	<b>978</b>
--------------	------------

<b>MARCHE</b>		<b>5</b>	<b>%</b>	<b>10</b>	<b>%</b>	<b>20</b>	<b>%</b>	<b>Total</b>	<b>%</b>
	<b>H</b>	19	14,39%	68	27,53%	20	37,74%	107	24,77%
	<b>F</b>	59	44,70%	148	59,92%	31	58,49%	238	55,09%
	<b>E</b>	54	40,91%	31	12,55%	2	3,77%	87	20,14%
		132	30,56%	247	57,18%	53	12,27%	432	

<b>VTT</b>		<b>10</b>	<b>%</b>	<b>30</b>	<b>%</b>	<b>50</b>	<b>%</b>	<b>Total</b>	<b>%</b>
	<b>H</b>	32	35,96%	80	83,33%	94	95,92%	206	72,79%
	<b>F</b>	23	25,84%	11	11,46%	3	3,06%	37	13,07%
	<b>E</b>	34	38,20%	5	5,21%	1	1,02%	40	14,13%
		89	31,45%	96	33,92%	98	34,63%	283	

<b>Route</b>		<b>30</b>	<b>%</b>	<b>60</b>	<b>%</b>	<b>100</b>	<b>%</b>	<b>Total</b>	<b>%</b>
	<b>H</b>	32	65,31%	64	96,97%	41	100,00%	137	87,82%
	<b>F</b>	5	10,20%	2	3,03%	0	0,00%	7	4,49%
	<b>E</b>	12	24,49%	0	0,00%	0	0,00%	12	7,69%
		49	31,41%	66	42,31%	41	26,28%	156	

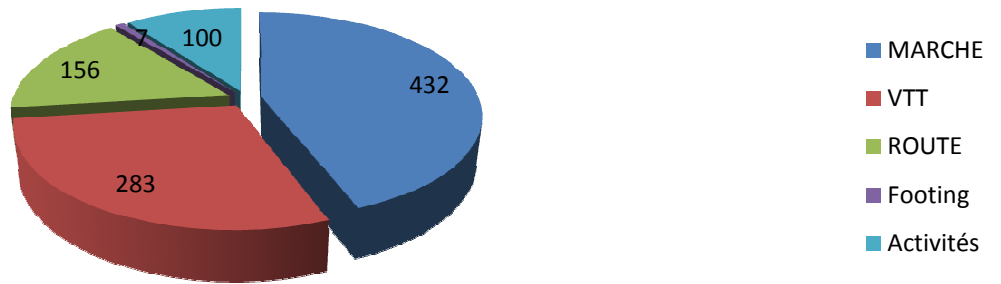
<b>Footing</b>	<b>H</b>							5	71,43%
	<b>F</b>							2	28,57%
	<b>E</b>							0	0,00%

7

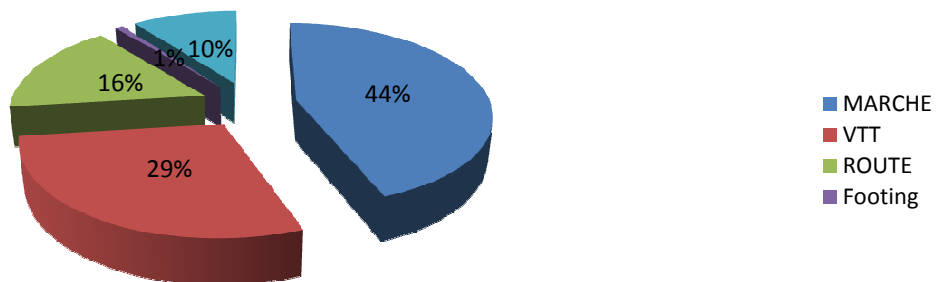
<b>TOTAL</b>	<b>H</b>	455	39,50%
	<b>F</b>	284	24,65%
	<b>E</b>	139	12,07%
		878	98,99%

Homme  
Femme  
Enfant

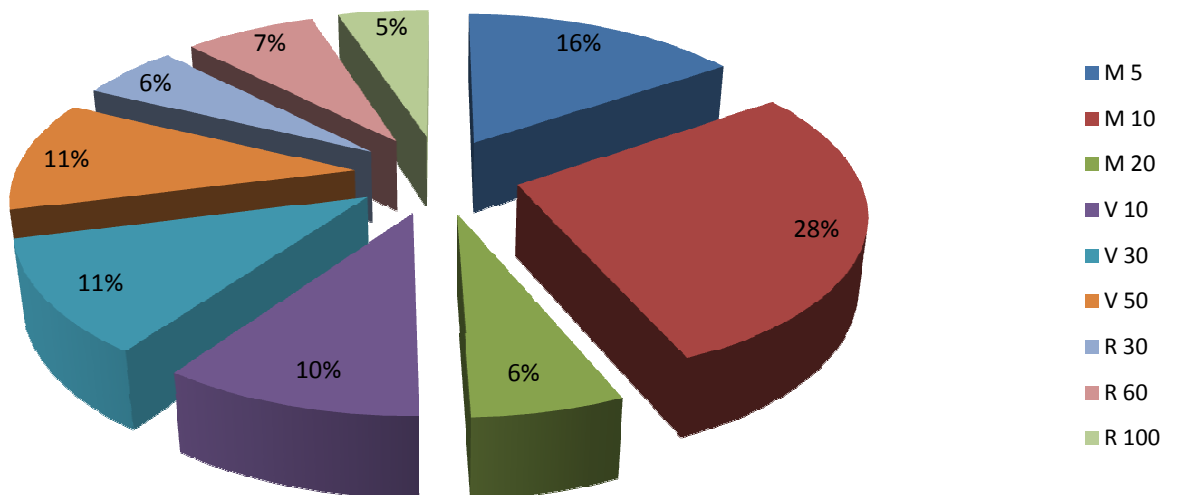
### Répartition par Activité



### Répartition par Activité



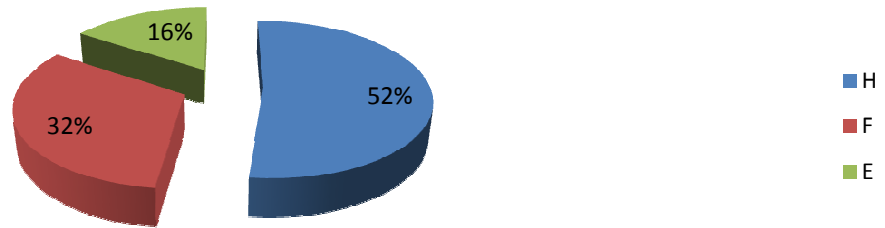
### Répartition par Parcours



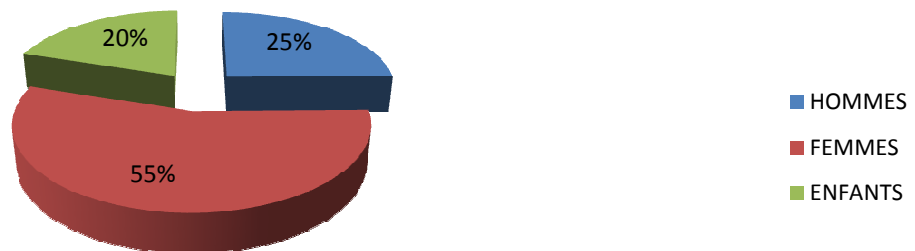
## WEEK END DU SPORT EN FAMILLE 2009 COMPARATIF

2004							
	MARCHE	VTT	ROUTE				TOTAL
HOMMES	53	116	72				285
FEMMES	97	27	14				147
ENFANTS	17	27	9				134
TOTAL	167	170	95				432
2005							
	MARCHE	VTT	ROUTE	KAYAK	SAMEDI	ROLLER	TOTAL
HOMMES	68	102	89	12	73	1	345
FEMMES	121	17	27	4	38	0	207
ENFANTS	25	22	36	2	98	11	194
TOTAL	214	141	152	18	209	12	746
2006							
	MARCHE	VTT	ROUTE	ACTIVITES			TOTAL
HOMMES	67	104	74				245
FEMMES	144	22	5				171
ENFANTS	43	32	10				85
TOTAL	254	158	89	150			651
2007							
	MARCHE	VTT	ROUTE				TOTAL
HOMMES	119	168	145				432
FEMMES	250	29	34				313
ENFANTS	90	50	21				161
TOTAL	459	247	200				906
2008							
	MARCHE	VTT	ROUTE				TOTAL
HOMMES	152	225	203				580
FEMMES	328	36	29				393
ENFANTS	106	56	17				179
TOTAL	586	317	249				1152
2009							
	MARCHE	VTT	ROUTE	Footing	Activités		TOTAL
HOMMES	107	206	137	5			455
FEMMES	238	37	7	2			284
ENFANTS	87	40	12	0			139
TOTAL	432	283	156	7	100		978

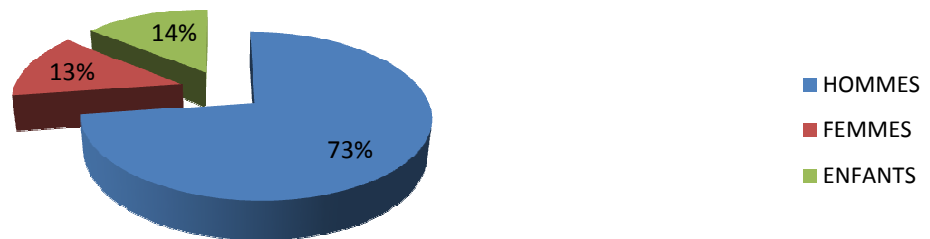
### Répartition par Sexe



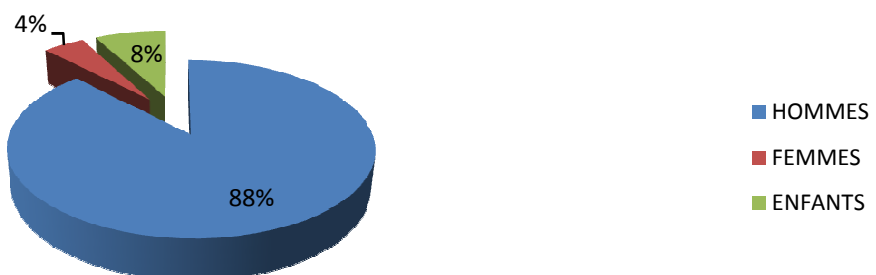
### Répartition par Sexe - Marche



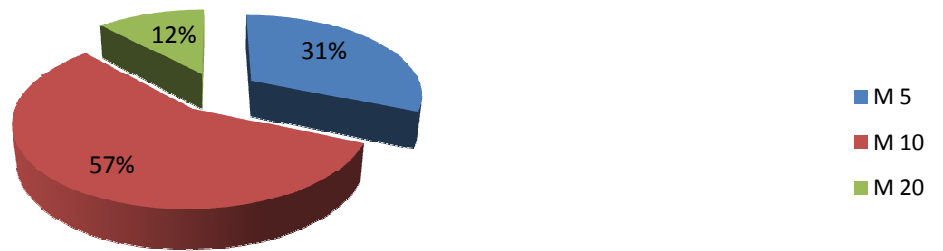
### Répartition par Sexe - VTT



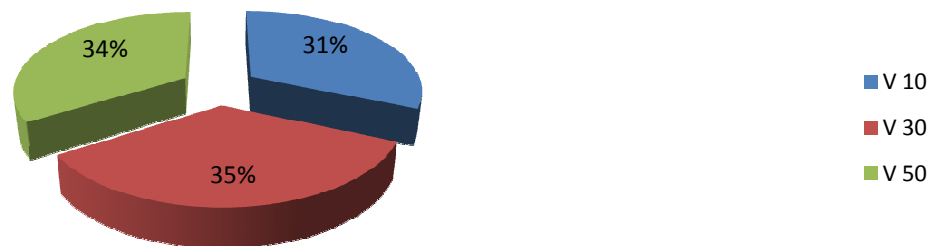
### Répartition par Sexe - Cyclos



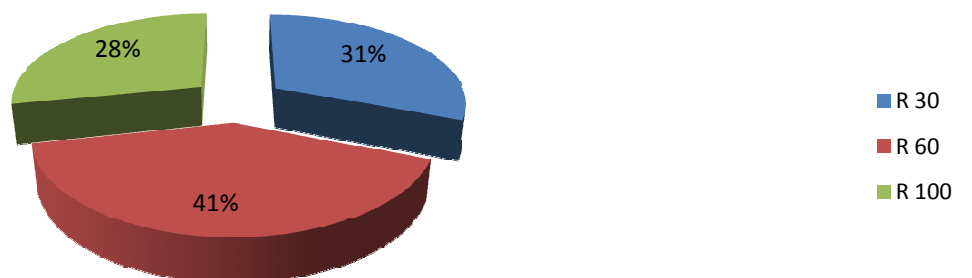
## Répartition des Marcheurs



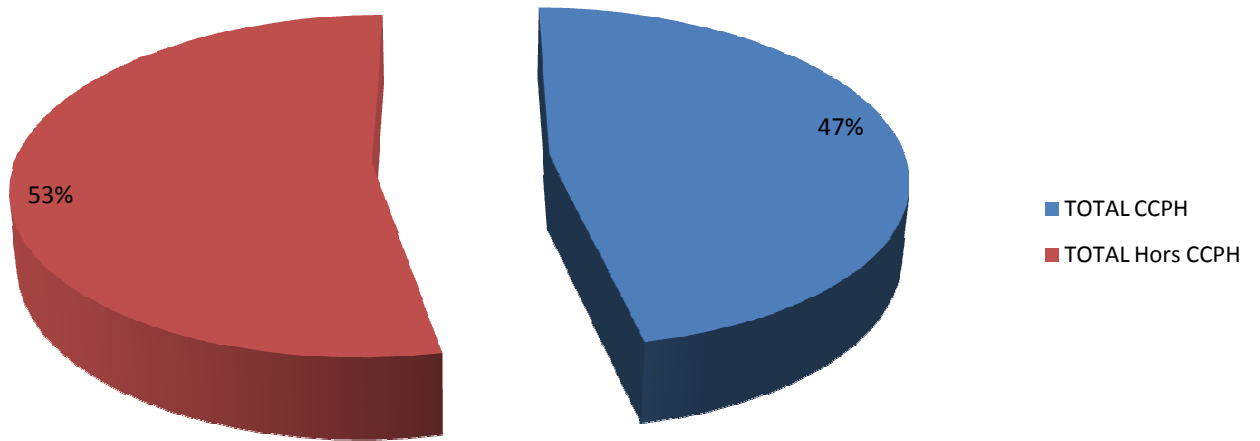
## Répartition VTTistes



## Répartition des Cyclos



## Répartition Géographique



## Répartition Com de Com

- |            |                 |            |                   |                   |            |
|------------|-----------------|------------|-------------------|-------------------|------------|
| ■ Ham      | ■ Athies        | ■ Brouchy  | ■ Croix Molineaux | ■ Douilly         | ■ Ennemain |
| ■ Epeville | ■ Esmery Hallon | ■ Matigny  | ■ Monchy Lagache  | ■ Muille Villette | ■ Offoy    |
| ■ Pithon   | ■ Quivieres     | ■ Sancourt | ■ Tertry          | ■ Ugny l'Equipee  | ■ y        |

